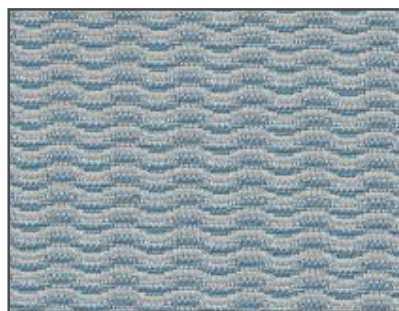


SUITE ESCAPE ROSEWOOD & ARTMORE



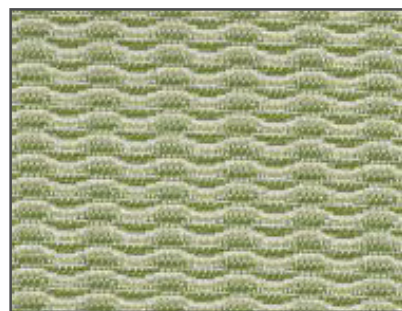
ARTM102
Artmore - Aquamarine



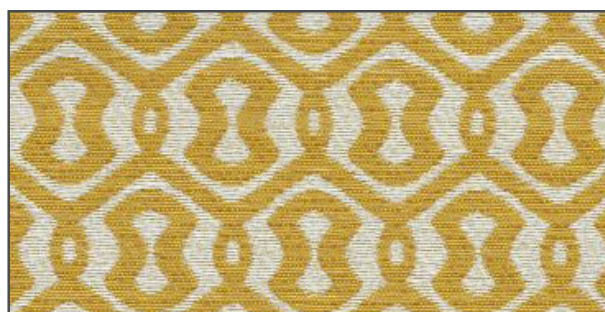
ROSE101
Rosewood - Tahiti



ARTM101
Artmore - Bayou



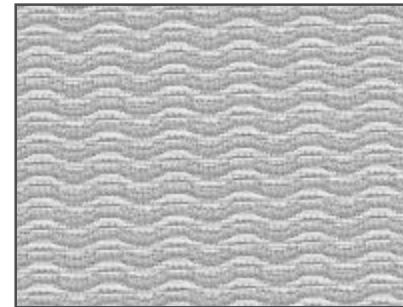
ROSE100
Rosewood - Grasslands



ARTM104
Artmore - Honeycomb



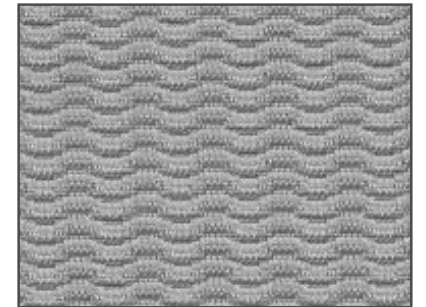
ROSE103
Rosewood - Sand Dune



ROSE105
Rosewood - Wheat



ARTM106
Artmore - Castle



ROSE106
Rosewood - Throw



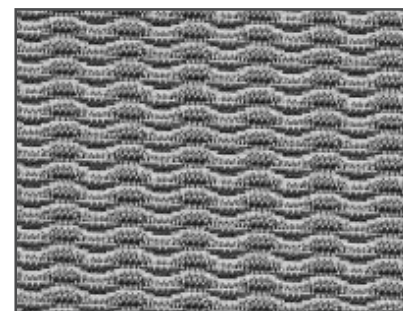
ARTM105
Artmore - Camel



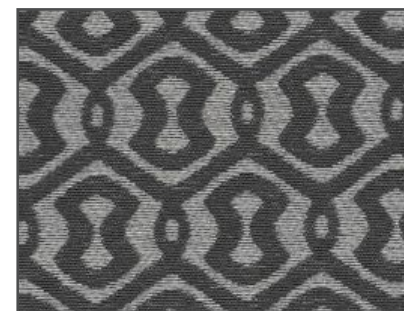
ARTM107
Artmore - Coffee



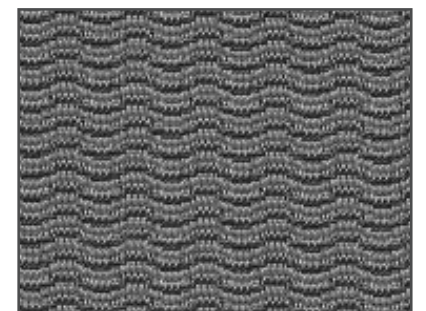
ARTM108
Artmore - Panther



ROSE104
Rosewood - Letterpress



ARTM109
Artmore - Mamba



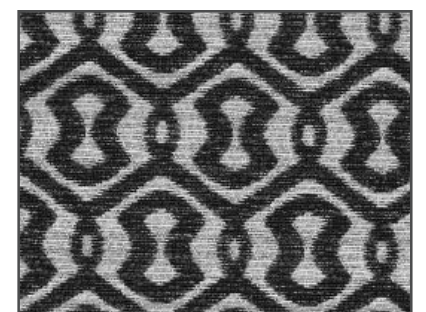
ROSE107
Rosewood - Nocturnal



ARTM103
Artmore - Caspian



ROSE102
Rosewood - Seaplane



ARTM100
Artmore - Nubian

SUITE ESCAPE ROSEWOOD & ARTMORE

GENERAL SPECIFICATIONS	ROSEWOOD	ARTMORE
Width	54"	54"
Weight	11.05 oz/linear yard	15.02 oz/linear yard
Composition	100% Bella-Dura® (Poly Olefin)	100% Bella-Dura® (Poly Olefin)
Repeat	0.75" H x 0.5" V	3.5" H x 2.625" V
Up the Roll	Yes	Yes
FLAME RETARDANCY SPECIFICATIONS		
CAL-TB 117-2013	Passes	Passes
NFPA 260	Passes	Passes
UFAC Class 1	Passes	Passes
PERFORMANCE SPECIFICATIONS		
Abrasion	100,000 DR	85,000 DR
Colorfastness to Crocking	Wet: 5 Dry: 5	Wet: 5 Dry: 5
Seam Slippage	Fill: 83 Warp: 111	Fill: 72 Warp: 107
Tensile Strength	Fill: 330 Warp: 326	Fill: 295 Warp: 264
Tear Strength	Fill: 40 Warp: 63	Fill: 35 Warp: 43
UV Resistance	Class 4 at 1,500 Hours	Class 4 at 1,500 Hours
Cleaning Code	WS - (20% Bleach Solution)	WS - (20% Bleach Solution)

RECOMMENDED APPLICATIONS

