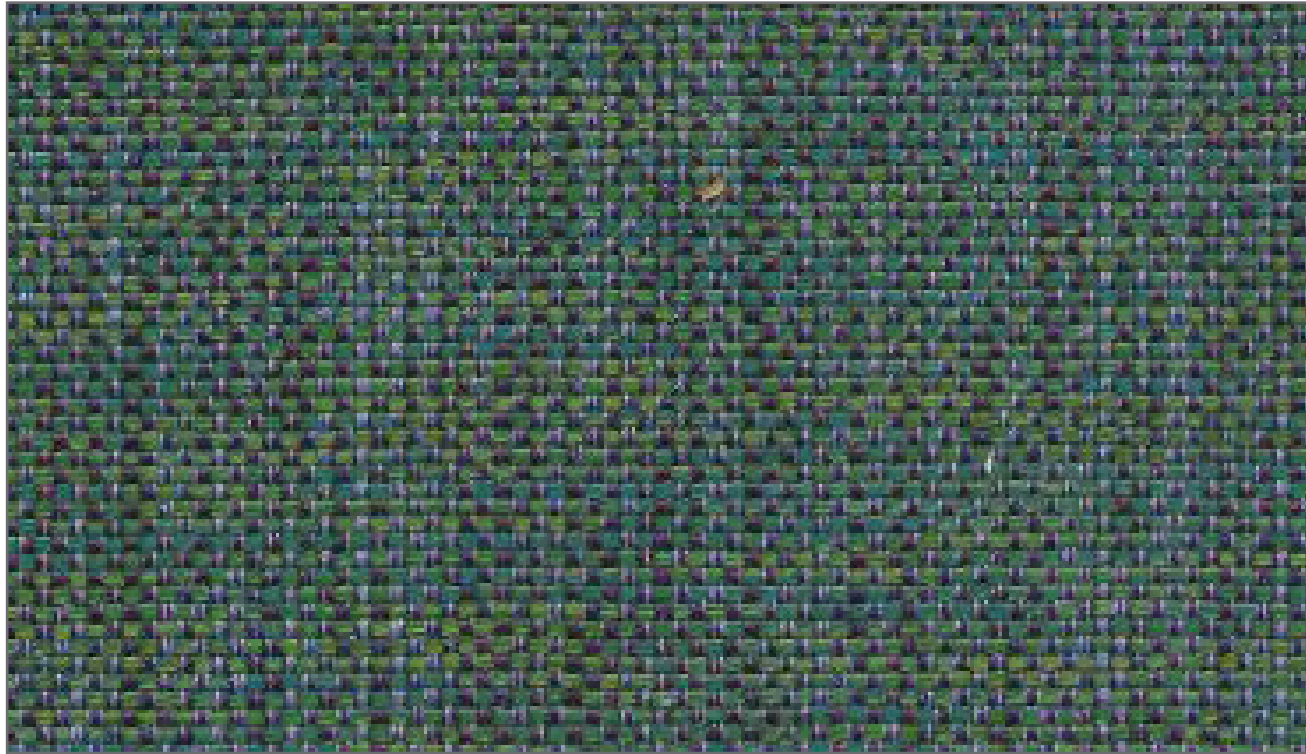


MINETTA



MMIN07
Hydrangea



MMIN09
Lilypad



MMIN04
Eucalyptus



MMIN11
Ocean



MMIN14
Poplar



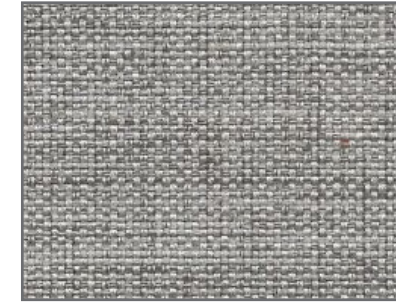
MMIN06
Husky



MMIN19
Skyline



MMIN10
Linen



MMIN17
Sand



MMIN13
Polenta



MMIN01
Birch



MMIN16
Sable



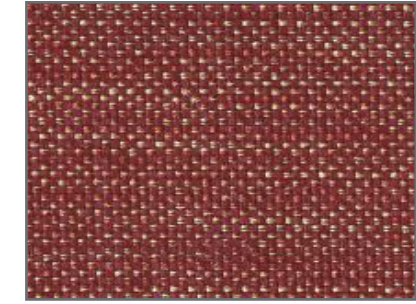
MMIN02
Chocolate



MMIN03
Cornhusk



MMIN05
Foliage



MMIN12
Paprika



MMIN18
Sedona



MMIN15
Raspberry



MMIN08
Lilac



MINETTA

GENERAL SPECIFICATIONS

Width	54"
Weight	19 oz/linear yard
Roll Size	Approx. 55-60 yds
Composition	100% Polyester
Backing	SBR

FLAME RETARDANCY SPECIFICATIONS

CAL-TB 117-2013	Passes
NFPA 260	Passes
UFAC Class 1	Passes

PERFORMANCE SPECIFICATIONS

Abrasion	100,000+ DR
Colorfastness to Crocking	Wet: 4.5 Dry: 4.5
Seam Slippage	Fill: 82.4 Warp: 88.6
Colorfastness to Light	40 Hours
Brush Pill	Class 4.5 per ASTM D3511

CLEANING INSTRUCTIONS

Cleaning Code S
Spot clean using water-free solvent or dry cleaning product. Cleaning by a professional service is recommended.

RECOMMENDED APPLICATIONS



*ACT® Registered Certification Marks

FINISHES

