

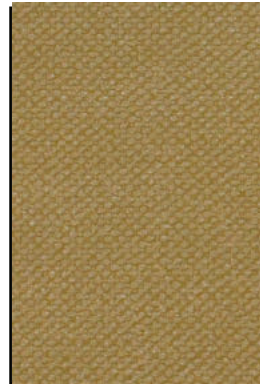
SCALE



SCA024
Scale - Plaster



SCA018
Scale - Arctic



SCA023
Scale - Pebble



SCA010
Scale - Suede



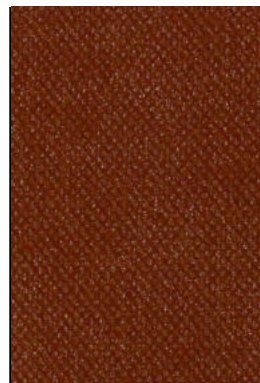
SCA002
Scale - Mocha



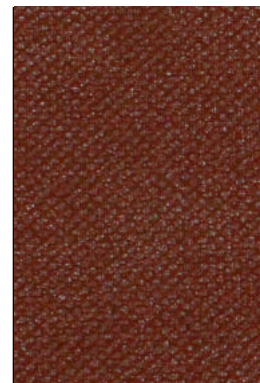
SCA020
Scale - Bear Cub



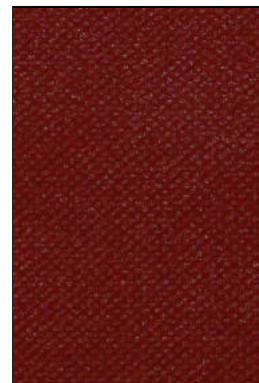
SCA013
Scale - Cumin



SCA015
Scale - Cayenne



SCA025
Scale - Merlot



SCA021
Scale - Cherry



SCA005
Scale - Syrah



SCA003
Scale - Haystack



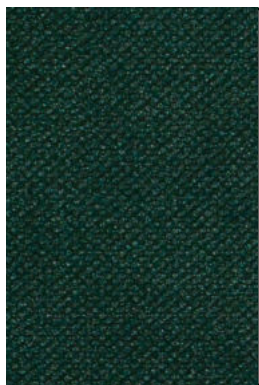
SCA014
Scale - Basil



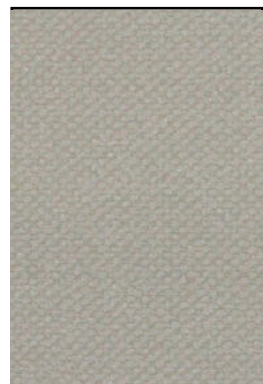
SCA001
Scale - Sage



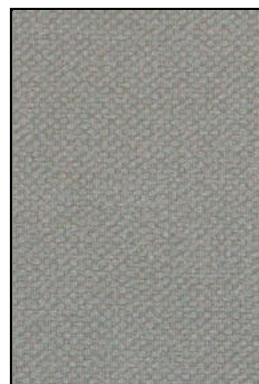
SCA012
Scale - Seaglass



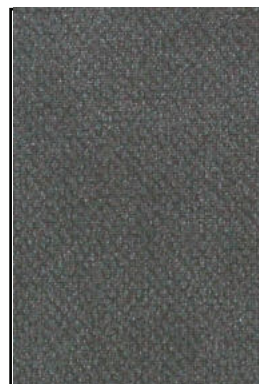
SCA017
Scale - Gemstone



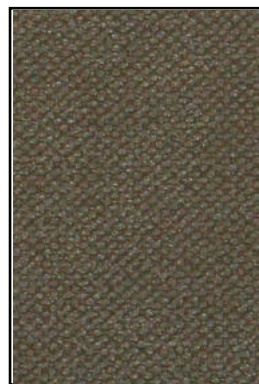
SCA011
Scale - Air



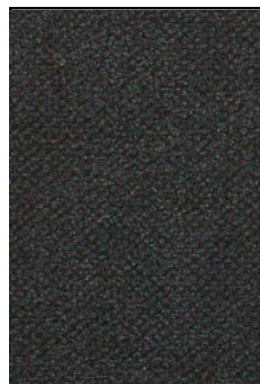
SCA008
Scale - Gravel



SCA006
Scale - Seagull



SCA022
Scale - Elephant



SCA007
Scale - Charcoal



SCA016
Scale - Mist



SCA019
Scale - Aegean



SCA009
Scale - Caribe



SCA026
Scale - Navy



SCA004
Scale - Ink

SCALE

GENERAL SPECIFICATIONS

Width	54"
Weight	31 oz/linear yard
Composition	Surface: 100% PVC (Phthalate Free) Substrate: 100% Polyester

FLAME RETARDANCY SPECIFICATIONS

CAL-TB 117-2013	Passes
UFAC Class 1	Passes
NFPA 260	Passes
FMVSS 302	Passes

PERFORMANCE SPECIFICATIONS

Abrasion	250,000+ DR
Colorfastness to Crocking	Wet: 5 Dry: 5
Coating Adhesion	Fill: 8.1 Warp: 8.0
Tensile Strength	Fill: 73 Warp: 95
Tear Strength: Tongue Tear	Fill: 11.0 Warp: 7.2
Seam Strength: Tack Tear	Fill: 40.0 Warp: 48.8
Colorfastness to Light	300 Hours
Flex Resistance	25,000+

RECOMMENDED APPLICATIONS



GENERAL TREATMENTS

Bleach Resistant	Yes - 10% Dilution
Stain Resistant	Yes
Denim Dye Transfer Resistance	Yes
Sulfide Stain Resistance	Yes

REDUCED ENVIRONMENTAL IMPACT

This product does not pose any exposure risks associated with the chemical in Prop 65

No added flame retardant chemicals

No added anti-bacterial/ anti-microbial chemicals

Phthalate Free

Lead/ Heavy metal free

BPA free/ Tris free/ Formaldehyde free

Does not contain conflict minerals

*Prop 65 Compliant

*AB2998 Compliant

FINISHES



*ACT® Registered Certification Marks